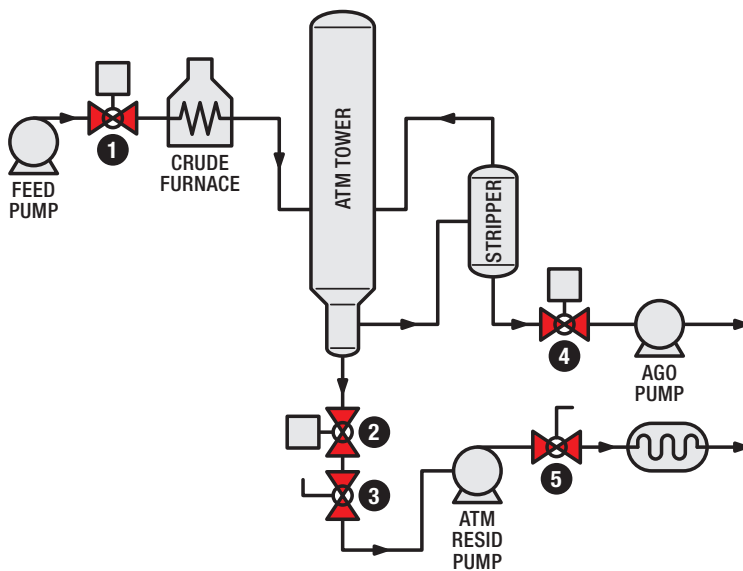


Atmospheric Distillation

Valve Number	Valve Description	Design Temperature Range		Design Pressure Range		Pipe Size		Recommended Valve ¹							
		deg F	deg C	psig	bar g	in	dn	C-Series	T-Series	G-Series	ISOLATOR 2.0	IRSVP	Watson Series	FlexStream®	
1	Feed	400 – 600	204 – 316	100 – 200	5 – 15	6 – 10	150 – 250				•				
2	Atmospheric Bottoms Emergency Block Valve	600 – 720	316 – 382	100	6	10 – 18	250 – 450	•							
3	Atmospheric Bottoms Pump	600 – 720	316 – 382	100	6	8 – 14	200 – 350	•							
4	Atmospheric Gas Oil Stripper Emergency Block Valve	600 – 720	316 – 382	100	6	6 – 10	150 – 250				•				
5	Atmospheric Bottoms Exchanger Heat Exchanger	600 – 720	316 – 382	300	20	6 – 10	150 – 250				•		•		
	General Ball Valves	25 – 900	-4 – 482	25 – 600	1.7 – 41.4	1 – 3	25 – 75			•					

¹ Recommend ISOLATOR 2.0 or T-Series if size, pressure and temperature conditions are met.



Typical operating conditions are:

- High temperature
400 – 720° F (204 – 382° C)
- Coking service
- Temperature cycling
- Erosive conditions