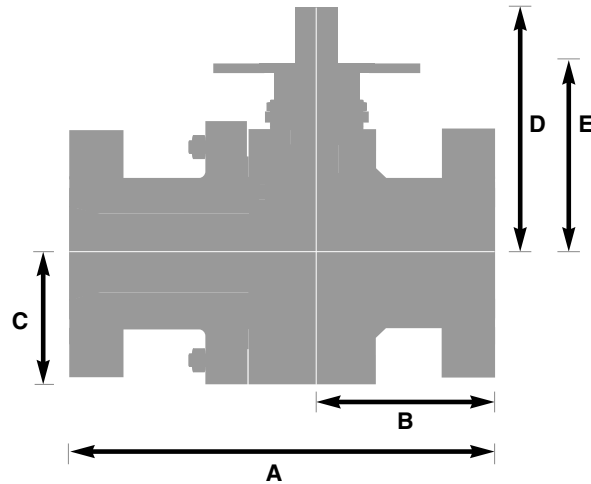


# C-Series Engineering Data

## The MOGAS C-Series

### Dimension Information

Dimensions for the MOGAS C-Series Valve Line are approximate. Additional dimension information, including information for valve sizes 14" - 24" is available from MOGAS or your local representative.



150# Full Opening Raised Face Flanged Ends													
Nominal Valve Size	End to End Dimensions		Centerline to End		Centerline to Bottom		Centerline to Top		Centerline to Top		Approx. Weight		
	A		B		C		D		E		lb.	kg	
NPS	DN	In.	mm	In.	mm	In.	mm	In.	mm	In.	mm	lb.	kg
1/2	15	4.25	108	2.13	54	2.50	64	2.50	64	2	51	20	9
3/4	20	4.63	117	2.38	60	2.50	64	2.50	64	2	51	25	11
1	25	5	127	2.69	68	2.50	64	5.50	140	5	127	28	13
1 1/2	40	6.50	165	2.75	70	3.13	80	5.38	137	4.88	124	40	18
2	50	7.06	179	3.10	79	3.63	92	7.17	182	6.10	155	51	23
3	80	8.06	204	3.88	99	4.63	118	9.07	230	7.45	189	99	45
4	100	9.06	230	3.65	93	5.25	133	9.93	252	8.31	211	134	61
6	150	15.50	394	7.44	189	7.63	194	13.38	340	11	279	447	203
8	200	18	457	9.19	233	9.38	238	16.01	407	13.20	335	674	306
10	250	21	533	10.72	272	11.75	298	20.42	519	16.63	422	1264	573
12	300	24	610	12	305	12.13	308	21.50	546	19.50	495	2040	925

600# Full Opening Raised Face Flanged Ends													
Nominal Valve Size	End to End Dimensions		Centerline to End		Centerline to Bottom		Centerline to Top		Centerline to Top		Approx. Weight		
	A		B		C		D		E		lb.	kg	
NPS	DN	In.	mm	In.	mm	In.	mm	In.	mm	In.	mm	lb.	kg
1/2	15	6.50	165	2.69	68	2.50	64	2.50	64	2	51	45	20
3/4	20	7.50	190	3.38	86	2.50	64	2.50	64	2	51	50	23
1	25	8.50	216	4.25	108	2.50	64	3	76	2.50	64	62	28
1 1/2	40	9.50	241	4.75	121	3.13	80	4.50	114	4	102	70	32
2	50	11.50	292	4.88	124	3.63	92	7.17	182	6.10	155	82	37
3	80	14	356	6	152	4.63	118	9.07	230	7.45	189	152	69
4	100	17	432	7.75	197	5.44	138	9.55	243	8.57	218	256	116
6	150	22	559	8.88	226	8	203	10.75	273	8.75	222	720	327
8	200	26	660	12	305	9.44	240	12.13	308	10.13	257	1140	517
10	250	31	787	13.75	349	10.75	273	15.13	384	13.13	334	2040	925
12	300	33	838	15.75	400	12.13	308	17	432	15	381	2640	1197

300# Full Opening Raised Face Flanged Ends													
Nominal Valve Size	End to End Dimensions		Centerline to End		Centerline to Bottom		Centerline to Top		Centerline to Top		Approx. Weight		
	A		B		C		D		E		lb.	kg	
NPS	DN	In.	mm	In.	mm	In.	mm	In.	mm	In.	mm	lb.	kg
1/2	15	5.50	140	2.75	70	2.50	64	2.50	64	2	51	33	15
3/4	20	6	152	2.38	60	2.50	64	2.50	64	2	51	40	18
1	25	6.50	165	2.69	68	2.50	64	5.50	140	5	127	55	25
1 1/2	40	7.50	190	2.75	70	3.13	80	5.38	137	4.88	124	80	36
2	50	8.50	216	3.80	97	3.63	92	7.17	182	6.10	155	64	29
3	80	11.12	282	4.93	125	4.63	118	9.07	230	7.45	189	118	54
4	100	12	305	5.75	146	5.25	133	9.93	252	8.31	211	176	80
6	150	15.88	403	7.44	189	7.63	194	13.38	340	11	279	483	219
8	200	19.75	502	9.18	233	9.38	238	16.01	407	13.20	335	834	378
10	250	22.38	568	10.91	277	11.75	298	20.42	519	16.63	422	1452	659
12	300	25.50	648	9.69	246	12.13	308	21.50	546	19.50	495	2280	1034

900# Full Opening Raised Face Flanged Ends													
Nominal Valve Size	End to End Dimensions		Centerline to End		Centerline to Bottom		Centerline to Top		Centerline to Top		Approx. Weight		
	A		B		C		D		E		lb.	kg	
NPS	DN	In.	mm	In.	mm	In.	mm	In.	mm	In.	mm	lb.	kg
1/2	15	9	229	4.50	114	3	76	4.75	121	4.25	108	45	20
3/4	20	9	229	4.50	114	3	76	4.75	121	4.25	108	40	18
1	25	10	254	5	127	3	76	4.75	121	4.25	108	63	29
1 1/2	40	12	305	6	152	4.50	114	4.75	121	4.25	108	98	44
2	50	14.50	368	6	152	4.31	109	8.30	211	6.70	170	158	72
3	80	15	381	6.50	165	4.88	124	9.22	234	7.65	194	196	89
4	100	18	457	7.25	184	6.63	168	8.75	222	7.75	197	530	240
6	150	24	610	9.63	245	8.75	222	11.13	283	9.13	232	1150	522
8	200	29	737	11.75	298	11.50	292	12.13	308	10.13	257	2225	1009
10	250	33	838	15.50	394	13.69	348	16.50	419	14.50	368	3850	1746
12	300	38	965	16	406	15.75	400	18	457	16	406	4900	2223

<b>1500# Full Opening Raised Face Flanged Ends</b>													
Nominal Valve Size		End to End Dimensions		Centerline to End		Centerline to Bottom		Centerline to Top		Centerline to Top		Approx. Weight	
NPS	DN	A		B		C		D		E		lb.	kg
1/2	15	8	203	4.50	114	3	76	4.75	121	3.75	95	65	29
3/4	20	8.50	216	3.25	83	N/A	N/A	4.75	121	3.75	95	70	32
1	25	10	254	4	102	4	102	4.75	121	3.88	99	75	34
1 1/2	40	13	330	5	127	3.50	89	8	203	7	178	115	52
2	50	14.50	368	6	152	4.31	109	8.30	211	6.70	170	158	72
3	80	18.50	470	7	178	5.63	143	9.50	241	7.88	200	365	166
4	100	21.50	546	9.31	236	7.13	181	12.38	314	9.38	238	645	293
6	150	27.75	705	11.50	292	10	254	19.50	495	14.75	375	1400	635
8	200	32.75	832	14.75	375	12.50	318	20	508	16.50	419	2300	1043
10	250	39	991	16.88	429	15.50	394	24	610	21	533	3800	1724
12	300	44.50	1130	24.75	629	14.25	362	26	660	22	559	4500	2041

<b>2500# Full Opening RTJ Flanged Ends</b>													
Nominal Valve Size		End to End Dimensions		Centerline to End		Centerline to Bottom		Centerline to Top		Centerline to Top		Approx. Weight	
NPS	DN	A		B		C		D		E		lb.	kg
1/2	15	9	229	4.50	114	3	76	4.75	121	3.75	95	65	29
3/4	20	9	229	4.50	114	3	76	4.75	121	3.75	95	75	34
1	25	10	254	5	127	3	76	4.75	121	3.75	95	92	42
1 1/2	40	12	305	6	152	4.50	114	8	203	6	152	143	65
2	50	17.87	454	7.41	188	6.13	158	9.05	230	7.45	189	230	104
3	80	23	584	11.13	283	8.37	213	11.59	294	9.63	245	450	204
4	100	26.88	683	10.75	273	7.88	200	13.13	334	10.13	257	875	397
6	150	36.50	927	14.63	372	11	279	15.38	391	12.38	314	2100	953
8	200	40.87	1038	16.38	416	13.25	337	28.30	719	25.30	643	3500	1588
10	250	50.88	1292	20.38	518	13.25	337	28.19	716	24.19	614	4700	2132
12	300	56.88	1444	22.75	578	18.50	470	28.19	716	24.19	614	5200	2359

<b>4500# Grayloc Ends</b>													
Nominal Valve Size		End to End Dimensions		Centerline to End		Centerline to Bottom		Centerline to Top		Centerline to Top		Approx. Weight	
NPS	DN	A		B		C		D		E		lb.	kg
1/2	15	10.38	264	5.19	132	3	76	4.75	121	3.75	95	80	36
3/4	20	10.75	273	5.38	137	3	76	4.75	121	3.75	95	100	45
1	25	10	254	5	127	3	76	8.25	210	7.25	184	150	68
1 1/2	40	12	305	6	152	4.50	114	8.50	216	7.50	191	250	113
2	50	17.75	451	8.88	226	5.63	143	8.50	216	6.50	165	370	168
3	80	23	584	9.50	241	9.38	238	15.50	394	11.38	289	445	202
4	100	26.50	673	13.25	337	11.50	292	21.50	546	18.50	470	1200	544
6	150	36	914	18	457	13	330	25.31	643	22.31	567	2800	1270
8	200	40.25	1022	20.13	511	13.25	337	28.19	716	25.19	640	4200	1905
10	250	45	1143	21.75	552	13.25	337	28.19	716	24.19	614	N/A	N/A
12	300	49.50	1257	20.63	524	18.50	470	28.19	716	24.19	614	N/A	N/A

## C<sub>v</sub> Information

C<sub>v</sub> information is approximate. Please contact MOGAS or your local representative for additional valve sizes.

<b>Full Bore C<sub>v</sub> Information</b>							
Valve Size	150#	300#	600#	900#	1500#	2500#	4500#*
1/2	26	26	26	26	26	20	6
3/4	62	62	62	52	52	33	19
1	114	114	114	85	85	62	38
1 1/2	271	271	271	223	223	145	140
2	498	498	498	432	432	271	271
2 1/2	799	799	799	640	640	432	385
3	1176	1176	1176	1071	978	640	670
4	2159	2159	2159	2014	1749	1071	1305
6	5076	5076	5076	4641	4019	2603	3309
8	9300	9300	8985	8120	7023	4641	6634
10	14866	14866	14096	12966	11289	7561	10565
12	21800	21800	20857	18579	16045	10881	15262

\* The C<sub>v</sub> information for the 4500# is based upon the inside diameter of the pipe schedule, while the remaining values are based upon ASME 16.34.

<b>Reduced Bore C<sub>v</sub> Information</b>							
Valve Size	150#	300#	600#	900#	1500#	2500#	4500#
1 x 3/4	31	31	31	41	41	29	40
1 1/2 x 1	48	48	48	54	54	81	81
3 x 2	195	195	195	206	218	333	312
4 x 3	519	519	519	549	632	1071	968
6 x 3	353	353	353	361	377	457	406
6 x 4	788	788	788	830	917	1516	1095
8 x 6	2101	2101	2162	2376	7815	4641	3053
10 x 8	4250	4250	4502	4992	6247	7561	7018
12 x 8	3177	3177	3258	3511	3948	6623	4138
12 x 10	7349	7349	7778	9269	12411	10881	13955
14 x 10	5947	5947	6278	6983	8592	13347	9071
14 x 12	13794	13794	15502	19582	19466	13347	18818
16 x 12	9301	9301	10013	11487	14864	—	—
16 x 14	19917	19917	23041	30124	25787	—	—
18 x 12	7571	7725	8074	8735	10228	—	—
18 x 14	13591	14080	15242	17642	24039	—	—
20 x 14	11010	11242	12068	13151	15594	—	—
20 x 16	18879	19553	22079	25726	35175	—	—
24 x 20	32666	33793	39620	48754	70991	—	—